

MODEL 816TL

FOR LADEN CONTAINER HANDLING
WITH STRADDLE CARRIERS



Standard supply includes:

- Pick-up points to fit the yoke beam of the straddle carrier
- Eight vertical pendular ISO twistlocks
- Lifting eyes near twistlocks
- Hydraulic telescoping
- Solenoid valves for all hydraulic functions
- Electrical and mechanical twistlock protection and indication system
- Electric telescoping protection system
- Lift interrupt signal

ELME Spreader Model 816TL is a twinlift telescopic top lift spreader for the handling of containers in twinlift mode. 816TL is designed for use with straddle carriers.

The strong and basic concept offers distinct advantages, such as two parallel telescopic beams, assuring max overlap. Beam sections dimensioned to absorb not only the vertical, but also the very considerable horizontal forces.

TWISTLOCK SYSTEM

Twistlock arrangement is manufactured in a very rugged design and is well-proven since many years.

816TL has hardened, pendulling ISO quick exchange twistlocks, hydraulically activated with electrical and mechanical interlocking against faulty locking and unlocking.

TELESCOPING SYSTEM

Telescoping is powered by one hydraulic cylinder outside each beam. At each stop mode activates a mechanical stop that locks the position.

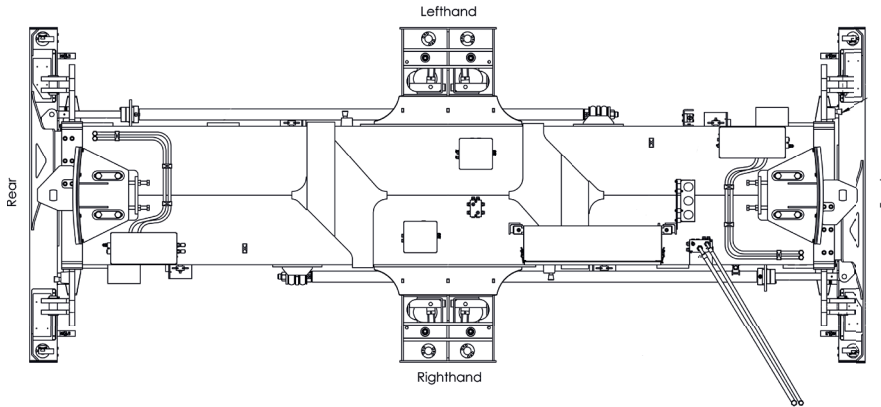
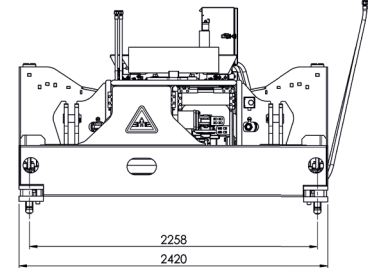
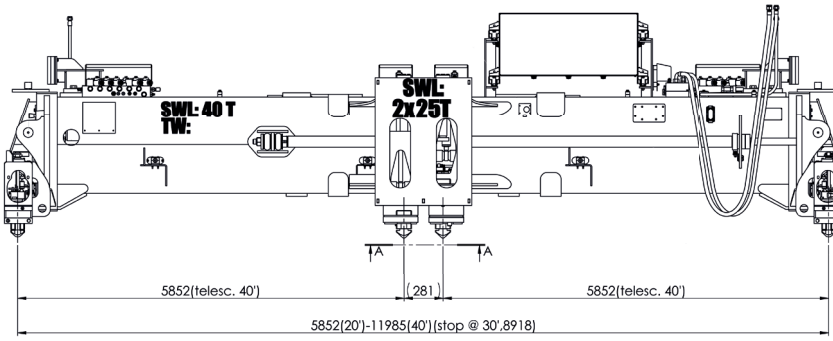
TWINLIFT SYSTEM

The system is of boxtype design and are driven by hydraulic cylinders.

CONTROL AND PROTECTION SYSTEM

Control voltage on the spreader is always converted to 24V DC for safety and reliability. Electrical systems monitor the state of the spreader at all times. Indicator lights advise the operator when the spreader is correctly seated, locked or not locked. Each signal is a precondition for the important protection functions of the spreader. Such as twistlock activation, telescoping, stop and lift interrupt.

MODEL 816TL



816TL.

TECHNICAL SPECIFICATIONS

Type of application	Straddle carrier
Type of lifting system	8 vertical twistlocks
Spreader weight (TW)	8 500 kgs without extra equipment
Lifting capacity (SWL)	40 tonnes +/- 10 % eccentric load 2 x 22,5 tonnes in Twinlift Mode
Lifting capacity (SWL), lifting eyes	4 x 10 tonnes
Twistlock	8 x ISO pendular 20 mm
Telescopic positions	20, 30, 40 and 2x20ft
Telescoping speed, 20-40ft	< 20 sec.*
Telescoping speed, 40-20ft	< 25 sec.*
Hydraulics, operating pressure up to	140 bar
Hydraulics, flow	40-60 L/min
Electric - control voltage	24 VDC
Colour	Signal yellow RAL 1003
Paint thickness	220 µ

* Calculated speed at 20° C

All specifications are subject to change without notice. A list of options enables you to adapt the product more precisely to your needs and further information is available on request.



Twin lift.



Twistlock and lifting eye.

HEAD QUARTER AND PRODUCTION

ELME Spreader AB

Phone +46 10 222 18 00
Email sales@elme.com
Website www.elme.com

SALES AND SPARE PARTS

ELME Spreader Trading (Shanghai) Co., Ltd

Phone +86 21 5169 8922
Email sales.cn@elme.com

SPARE PARTS

ELME Americas Inc.

Phone +1 731 588 02 20
+1 731 332 09 29
Email sales.us@elme.com

Visit www.elme.com for details, spare parts and more products.

ELME™
Swedish Spreader Systems